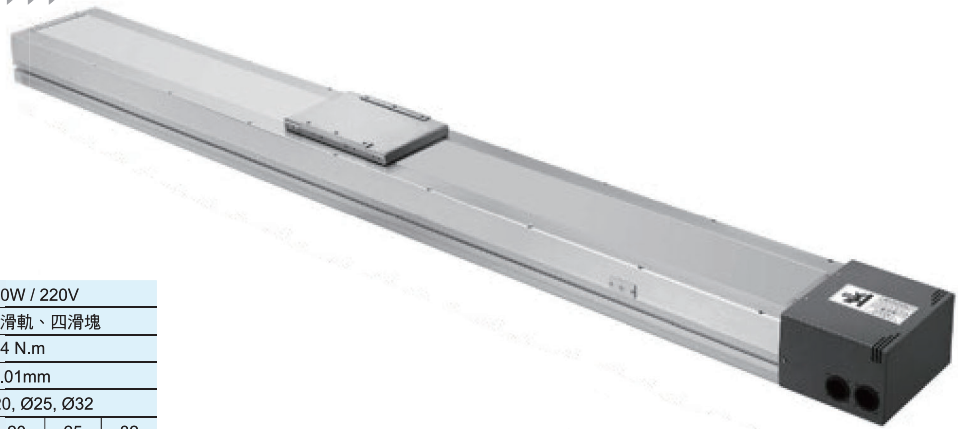


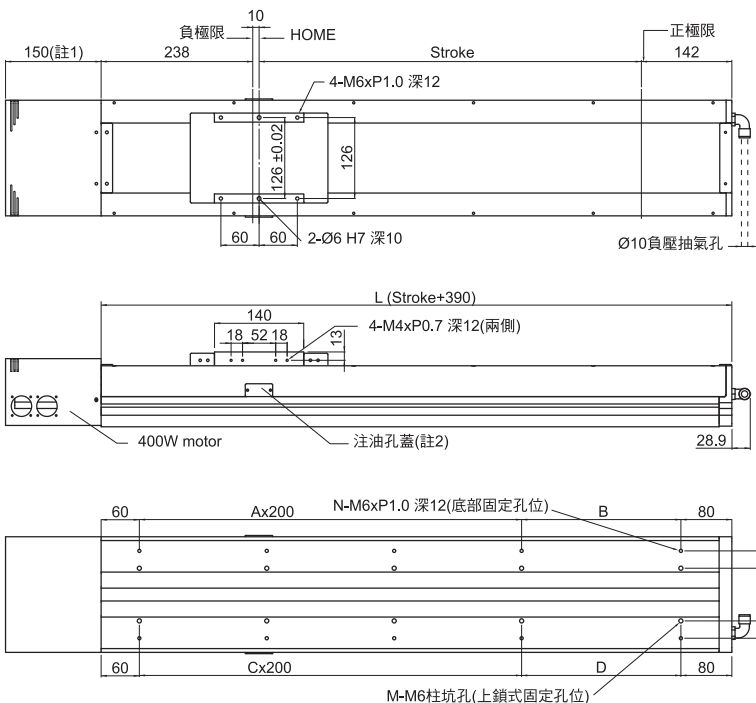
SAB180C型

滾珠螺桿系列

無塵室防塵等級



適用馬達	AC-750W / 220V					
滑軌與滑塊	20mm 雙滑軌、四滑塊					
額定扭矩	2.4 N.m					
重複精度	±0.01mm					
滾珠螺桿外徑 (mm)	Ø16, Ø20, Ø25, Ø32					
螺桿導程 (mm)	5	10	20	25	32	
最高速度 (mm/sec)	250	500	800	1250	1000	
最大荷重 (kg)	水平	130	100	70	40	20
Max. Weight	垂直	65	45	28	14	10
光電開關	Model No. 671 x 3 pcs					
負載力矩表 N.m			Ma: 263.3 N.m			
			Mb: 242.5 N.m			
			Mc: 242.5 N.m			

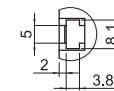


SAB180C直接式規格表

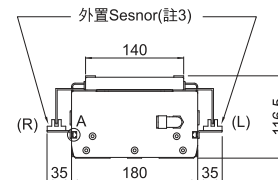
註1: 長度依馬達不同而變更馬達蓋為選配

註2: 注油時需退回原點位置加注螺桿時需再退50mm

註3: 外置SENSOR安裝(可選擇R右側或L左側)



(A)

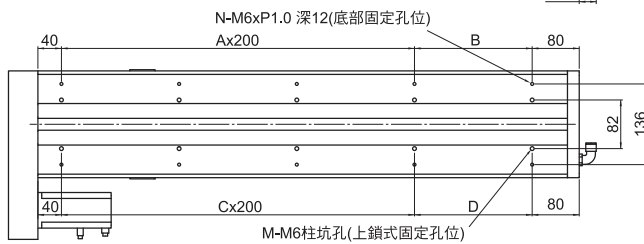
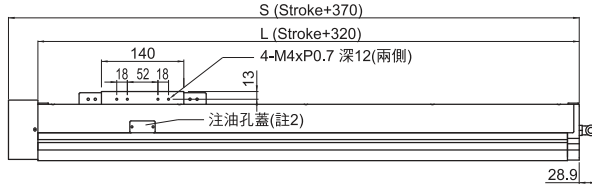
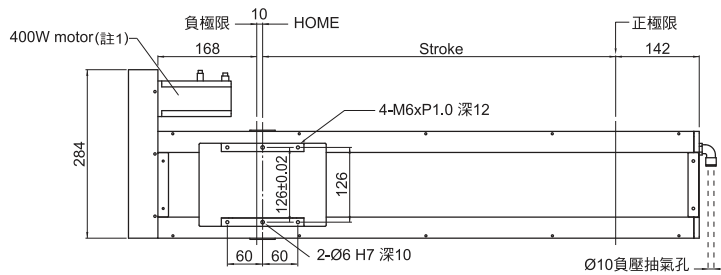


SENSOR出線號數如下:

1. 正極限 +LS
2. 原點 HOME
3. 負極限 -LS

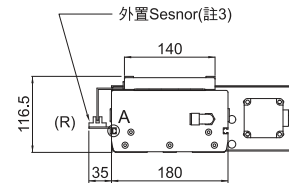
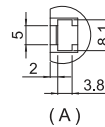
單位: mm

行程Stroke	100	200	300	400	500	600	700	800	900	1000	1100	1200	1300	1400	1500	1600	1700	1800	1900	2000	2100	2200
L	490	590	690	790	890	990	1090	1190	1290	1390	1490	1590	1690	1790	1890	1990	2090	2190	2290	2390	2490	2590
A	1	1	2	2	3	3	4	4	5	5	6	6	7	7	8	8	9	9	10	10	11	11
B	150	250	150	250	150	250	150	250	150	250	150	250	150	250	150	250	150	250	150	250	150	250
N	6	6	8	8	10	10	12	12	14	14	16	16	18	18	20	20	22	22	24	24	26	26
C	1	1	2	2	3	3	4	4	5	5	6	6	7	7	8	8	9	9	10	10	11	11
D	150	250	150	250	150	250	150	250	150	250	150	250	150	250	150	250	150	250	150	250	150	250
M	6	6	8	8	10	10	12	12	14	14	16	16	18	18	20	20	22	22	24	24	26	26
重量 Weight (kg)	8.0	10.4	12.8	15.2	17.6	20.0	22.4	24.8	27.2	29.6	32.0	34.4	36.8	39.2	41.6	44.0	46.4	47.8	49.0	50.2	51.4	
馬達迴轉數 Motor rotation (rpm)	3000	3000	3000	3000	3000	3000	2500	2000	2000	2000	2000	1500	1500	1500	1500	1500	1200	1200	1200	1000	1000	



SAB180C間接式規格表

- 註1: 適用馬達 400W, 750W
- 註2: 注油時需退回原點位置加注螺桿時需再退50mm
- 註3: 外置SENSOR安裝R右側

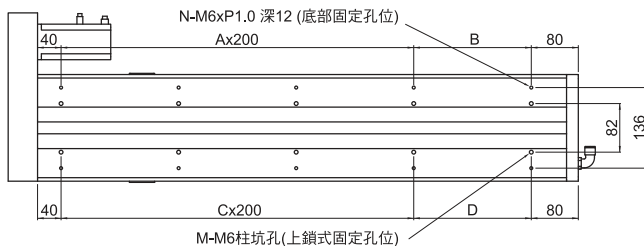
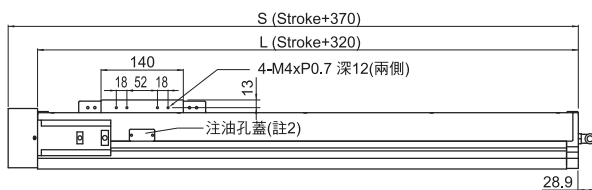
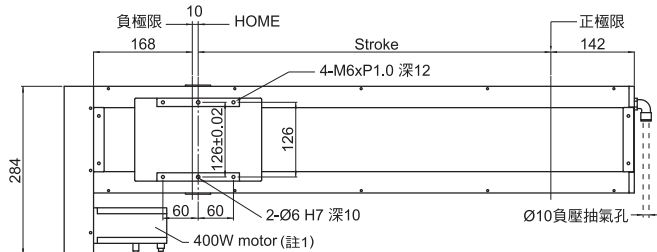


SENSOR出線號數如下:

- 1.正極限 +LS
- 2.原點 HOME
- 3.負極限 -LS

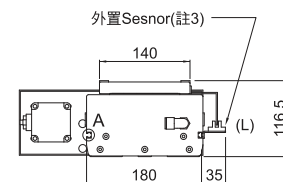
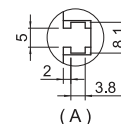
行程Stroke	100	200	300	400	500	600	700	800	900	1000	1100	1200	1300	1400	1500	1600	1700	1800	1900	2000	2100	2200
S	470	570	670	770	870	970	1070	1170	1270	1370	1470	1570	1670	1770	1870	1970	2070	2170	2270	2370	2470	2570
L	420	520	620	720	820	920	1020	1120	1220	1320	1420	1520	1620	1720	1820	1920	2020	2120	2220	2320	2420	2520
A	1	1	2	2	3	3	4	4	5	5	6	6	7	7	8	8	9	9	10	10	11	11
B	100	200	100	200	100	200	100	200	100	200	100	200	100	200	100	200	100	200	100	200	100	200
N	6	6	8	8	10	10	12	12	14	14	16	16	18	18	20	20	22	22	24	24	26	26
C	1	1	2	2	3	3	4	4	5	5	6	6	7	7	8	8	9	9	10	10	12	12
D	100	200	100	200	100	200	100	200	100	200	100	200	100	200	100	200	100	200	100	200	100	200
M	6	6	8	8	10	10	12	12	14	14	16	16	18	18	20	20	22	22	24	24	26	26
重量 Weight (kg)	7.7	10.1	12.5	14.9	17.3	19.7	22.1	24.5	26.9	29.3	31.7	34.1	36.5	38.9	41.3	43.7	44.9	46.1	47.3	48.5	49.7	50.9
馬達迴轉數Motor rotation (rpm)	3000	3000	3000	3000	3000	3000	3000	2000	2000	2000	2000	1500	1500	1500	1500	1500	1500	1200	1200	1200	1000	1000

單位: mm



SAB180C間接式規格表

- 註1: 適用馬達 400W, 750W
- 註2: 注油時需退回原點位置加注螺桿時需再退50mm
- 註3: 外置SENSOR安裝L左側



SENSOR出線號數如下:

- 1.正極限 +LS
- 2.原點 HOME
- 3.負極限 -LS

行程Stroke	100	200	300	400	500	600	700	800	900	1000	1100	1200	1300	1400	1500	1600	1700	1800	1900	2000	2100	2200
S	470	570	670	770	870	970	1070	1170	1270	1370	1470	1570	1670	1770	1870	1970	2070	2170	2270	2370	2470	2570
L	420	520	620	720	820	920	1020	1120	1220	1320	1420	1520	1620	1720	1820	1920	2020	2120	2220	2320	2420	2520
A	1	1	2	2	3	3	4	4	5	5	6	6	7	7	8	8	9	9	10	10	11	11
B	100	200	100	200	100	200	100	200	100	200	100	200	100	200	100	200	100	200	100	200	100	200
N	6	6	8	8	10	10	12	12	14	14	16	16	18	18	20	20	22	22	24	24	26	26
C	1	1	2	2	3	3	4	4	5	5	6	6	7	7	8	8	9	9	10	10	12	12
D	100	200	100	200	100	200	100	200	100	200	100	200	100	200	100	200	100	200	100	200	100	200
M	6	6	8	8	10	10	12	12	14	14	16	16	18	18	20	20	22	22	24	24	26	26
重量 Weight (kg)	7.7	10.1	12.5	14.9	17.3	19.7	22.1	24.5	26.9	29.3	31.7	34.1	36.5	38.9	41.3	43.7	44.9	46.1	47.3	48.5	49.7	50.9
馬達迴轉數Motor rotation (rpm)	3000	3000	3000	3000	3000	3000	3000	2000	2000	2000	2000	1500	1500	1500	1500	1500	1500	1200	1200	1200	1000	1000

單位: mm